

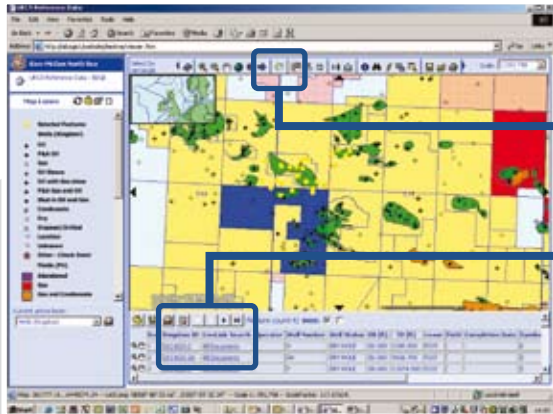
Leverage the power of your GIS application - *integrate* with Livelink Enterprise Server

LIVEGIS provides the link between your GIS (Geographic Information Systems) and Livelink Enterprise Server with dynamic search and retrieval of data and documents based on the features selected from your map based application.

LIVEGIS utilizes all the power of Livelink's core search functionality yet it sits outside the core application - it can be installed, configured and tested without interruption to your Livelink core application, and can be integrated with virtually any GIS application.



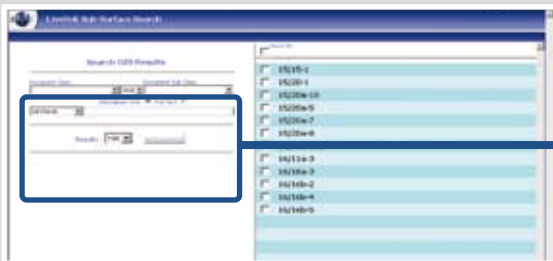
Select your features from your GIS application



Select all...



...or select specific data elements to search against



Now filter your search...



Search by Document Class
(configured to match your meta data structure)

...or utilise the full power of the Livelink free text search engine.



Your results returned in a usable listing with attributes displayed to your configuration.

It's a single click...

- ...to display format in Grid or List
- ...to sort results by column (attribute)
- ...to export results to spreadsheet application
- ...to open selected document
- ...to view all file attributes
- ...to go to file location in native Livelink.

Spend less time looking for information - more time using it...
...making better informed decisions...faster.



Business Driven Product Design...

...leveraging your Livelink investment.

Product concepts and designs driven by many years of practical business experience in Knowledge and Information Management, coupled with a deep technical knowledge of the Livelink ECM framework. This mix of experience and expertise develops products that meet the specific differing requirements identified by our practical business experience in corporate, operational and project environments. **No bells...No whistles...just focused functionality!**

LIVEGIS allows your operatives to utilise simple geographical navigation to access **fast, accurate retrieval of information - when they need it - how they need it...**and...they no longer need to be technology experts.

Functionality...

- Dynamic linked attribute search capability
- Business defined search filter interface
- Search on custom attributes and/or free text
- Returns results in business defined data set
- Results sets that can be sorted and exported
- Simple Interfaces that reflect expert's thinking

...leveraging value...

- Reduced requirement for high IT skills
- Reduced application learning curves and costs
- Accelerate user adoption and increase utilisation
- Users focus on their data, information and knowledge
- Encourages user responsibility for data integrity

...for your business...

- Increased confidence in retrieval speed and accuracy
- Increase the speed and integrity of business decisions
- Leverage ROI on your GIS and Livelink ECM

Version Compatibility

- MS Windows 2000 & 2003 Server operating systems
- Livelink v9.1.x, 9.2.x, 9.5.x

The Independent Application Environment

The **LIVEGIS** application sits outside the core Livelink application environment and can therefore be installed with zero risk to, or intervention with, your core Livelink application.

As a standard **LIVEGIS** is installed on a Livelink server, but can be installed on any client designated server, providing the host has connectivity to the Livelink server and database connectivity (database client installed) to the Livelink database.



DIRECTION

MEASUREMENT

VALUE

Spend less time looking for information - more time using it...
...making better informed decisions...faster.